

PLATE MAGNETS

PLATE MAGNETS

Designed to capture ferrous metal in conveyed or gravity flow applications to improve product purity and protect processing equipment from damage. They are available in Ceramic or Rare Earth and EZ-Clean or Self-Clean designs to fit your strength & maintenance demands.

Above the Flow Applications:

Flush Face (FF) and Single Product Layer Plate Magnets ■■

Installed above the product flow, these powerful plate magnets have incredible reach-out to attract and capture ferrous metal as it passes underneath.

Below the Flow Applications:

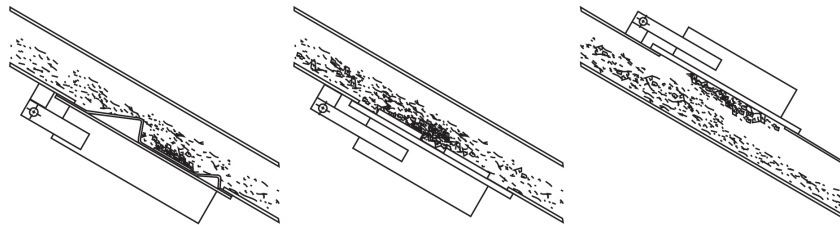
Exposed Pole (EP) and Spout Magnet ■■

Since the product flows directly over the magnetic face, these plate magnets provide intimate contact with metal contaminants, while also reaching-out through the entire product burden. Both styles have design features to keep captured metal from washing off in the ensuing product stream.

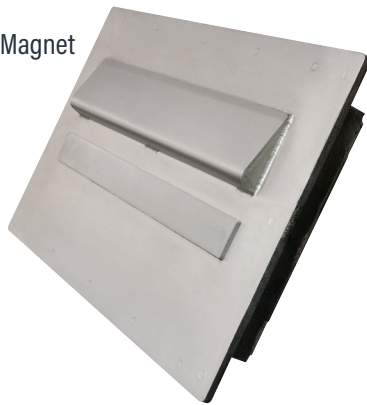
Find Plate Magnets Online And Download Technical Sheets At...

<http://www.magnetics.com/tg/plates.asp>

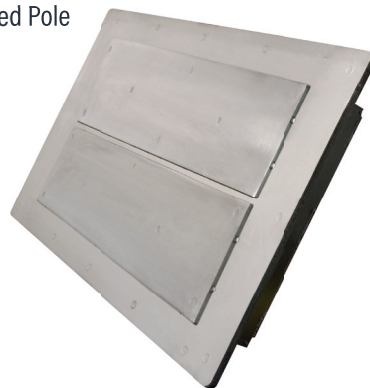
Download Or Request Plate Magnet Tech Sheet



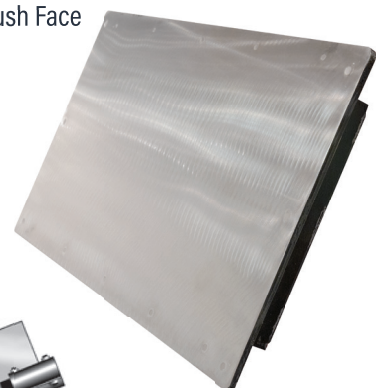
Spout Magnet



Exposed Pole



Flush Face



Single Product Layer
Plate Magnet



Self-Cleaning
Plate Magnet

