

FX SERIES LIFTING MAGNETS

FXE LIFTING MAGNET - 50L SERIES

The FXE50L Series Permanent Lifting Magnet is designed with the strength and reach-out required for lifting thinner, smooth-surfaced material in applications lifting long narrow products such as C-Channel, I-Beams or square tubing. Ideal for smaller/narrow part handling in repetitive lifting applications. Can use the side of the magnet to rotate or tip parts to the ideal lifting surface or orientation. **480 VAC single phase power supply required @ up to 7.5 amps, 0.8 second pulse**

» 2018 ASME B30.20 BTH-1 Design Category B, Service Class 3



FXE0880-50L



FXE1320-50L



FXE2200-50L

80 Series	WLL		Magnet		Overall			Poles	Bail Opening			Weight
Model No.	LBS	KG	Ln. (in)	Wd. (in)	Ln. (in)	Wd. (in)	Ht. (in)	No. of Poles	Th. (in)	Ht. (in)	Wd. (in)	lbs (kg)
FXE0880-50L	880	400	9.5	2	11.5	3.75	17.75	4				51 (23)
FXE1320-50L	1320	6000	14.6	2	16.5	3.75	17.75	8				68 (31)
FXE2200-50L	2200	1000	24.7	2	26.8	3.75	17.75	10				97 (44)

Working Load Limit (WLL) in lbs (kg) & Max sheet size Due To Sag For Material Thickness For Single Magnet Use

Model No.	5/16 (8mm)	Sheet LxW	3/8 (10mm)	Sheet LxW	1/2 (15mm)	Sheet LxW	3/4 (20mm)	Sheet LxW	1 (25mm)	Sheet LxW
FXE0880-50L	154 (70)	71" x 39"	309 (140)	79" x 59"	440 (200)	79" x 39"	550 (250)	98" x 39"	880 (400)	118" x 39"
FXE1320-50L	220 (100)	79" x 39"	440 (200)	98" x 39"	660 (300)	98" x 39"	770 (350)	118" x 39"	1320 (600)	157" x 39"
FXE2200-50L	330 (150)	98" x 59"	660 (300)	118" x 59"	880 (400)	118" x 39"	1100 (500)	157" x 59"	2200 (1000)	196" x 59"

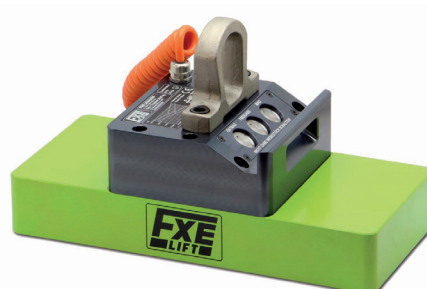
FXE LIFTING MAGNET - 80 SERIES

The FXE80 Series Permanent Lifting Magnet has great strength for lifting heavier material in applications typically seen in shipyard or heavy equipment manufacturing. Ideal for handling black material, flame-cut, or hot-rolled steel, this durable magnet is constructed for many years of industrial use. **480 VAC single phase power supply required @ up to 10 amps, 0.8 second pulse**

» 2018 ASME B30.20 BTH-1 Design Category B, Service Class 3



FXE2200-80



FXE5500-80



FXE8800-80

80 Series	WLL		Magnet		Overall			Poles	Bail Opening			Weight
Model No.	LBS	KG	Ln. (in)	Wd. (in)	Ln. (in)	Wd. (in)	Ht. (in)	No. of Poles	Th. (in)	Ht. (in)	Wd. (in)	lbs (kg)
FXE2200-80	2200	1000	6.8	6.8	9	9.0	11.6	4	1.2	3	2.4	86 (39)
FXE5500-80	5500	2500	17.6	6.8	20	9.0	11.6	10	1.2	3.5	2.7	170 (77)
FXE8800-80	8800	4000	28.5	6.8	30.8	9.0	11.6	16	0.9	7.9	5.5	291 (132)

Working Load Limit (WLL) in lbs (kg) & Max sheet size Due To Sag For Material Thickness For Single Magnet Use

Model No.	5/16 (8mm)	Sheet LxW	3/8 (10mm)	Sheet LxW	1/2 (15mm)	Sheet LxW	3/4 (20mm)	Sheet LxW	1 (25mm)	Sheet LxW
FXE2200-80	440 (200)	79" x 59"	660 (300)	79" x 59"	1320 (600)	79" x 59"	1760 (800)	79" x 59"	2200 (1000)	79" x 59"
FXE5500-80	1100 (500)	79" x 59"	1650 (750)	118" x 59"	3300 (1500)	118" x 59"	4400 (2000)	118" x 59"	5500 (2495)	118" x 59"
FXE8800-80	1765 (800)	118" x 59"	2650 (1200)	118" x 59"	5290 (2400)	118" x 59"	6600 (3000)	157" x 59"	8800 (3992)	157" x 59"