

ELECTROMAGNETS & COUNTER WHEELS

ELECTROMAGNETS AND POWER SUPPLY

Electromagnets offer On/Off capability through the application of controlled DC electrical current, controlled holding power and on-command release of ferrous steel parts. Most electromagnets require specially designed power supplies to achieve optimum magnetic performance. IMI offers power supplies for all of your electromagnet applications. Continuous duty 158°F (70°C) to 192°F (89°C) temperature rise. All electromagnets are **100% Duty Cycle**.

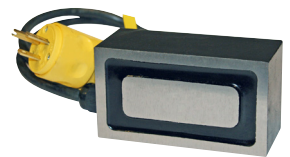
Parallel Pole Electromagnets: Ideal for Pick and Place or Lifting Applications where parts have flat surfaces and can be custom machined to specifically fit the application. Side mounted terminal blocks allow one set of lead wires from magnet to power supply (no splicing required, minimum 18 gauge leads). These electromagnets offer broad application potential due to their ability to deliver improved reach out through air gaps (i.e. painted, plated & coated surfaces).

Rectangular & Round Island Pole Electromagnets: Ideal for Pick and Place or Lifting applications where parts have uneven surfaces or odd shapes and provide concentrated holding power & high responsiveness in manual or automatic applications.

Power Supply: Designed for manual operation. Uses 120VAC input, 16 to 26VDC variable dual output, 10-foot grounded power cord and fuse protection. Temp. range -4°F to 160°F (-20°C - 71°C). Power supplies with automatic reverse pulse upon release are available.

Rectangular Island Pole Electromagnets										
WLL - lbs (kg)	Height (in)	Width (in)	Length (in)	Tap Size	Number of Holes	Spacing (in)	Watts	Weight (lbs)	24 VDC Model No.	120 VAC Model No.
50 (22.68)	1-1/4	1-1/2	1-1/2	10-32	1	Centered	8.0	0.31	ES2-111	-
80 (36.29)	1-1/4	1-1/2	2-1/2	10-32	2	1	10.0	1.00	ES2-121	ESA-121
150 (68.04)	1-1/2	2-1/2	2-1/2	1/4-20	1	Centered	14.0	2.00	ES2-221	ESA-221
300 (136.08)	1-7/8	2-1/2	4-1/2	1/4-20	2	2	29.0	5.00	ES2-241	ESA-241
850 (385.55)	2-1/2	4	8	3/8-16	2	4	58.0	18.00	ES2-482	-

Rectangular Electromagnet with 120 VAC cord



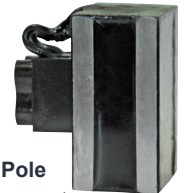
Round Island Pole Electromagnets							
WLL - lbs (kg)	Diameter (in)	Length (in)	Tap Size	Watts	Weight (lbs)	24 VDC Model No.	120 VAC Model No.
5 (2.27)	3/4	1-1/4	10-32	1.4	0.2	ER2-071	-
7 (3.18)	1	3/4	10-32	1.5	0.2	ER2-101	-
12 (5.44)	1	1-1/4	10-32	3.6	0.3	ER2-102	-
25 (11.34)	1-1/4	1-1/4	1/4-20	4.4	0.4	ER2-103	-
40 (18.14)	1-1/2	1-1/2	1/4-20	4.6	0.7	ER2-104	-
90 (40.82)	2	1-5/8	1/4-20	6.0	1.2	ER2-201	ERA-201
100 (45.36)	2	2-1/2	1/4-20	16.8	2.0	ER2-202	ERA-202
200 (90.72)	3	3	5/16-18	26.3	5.0	ER2-303	ERA-303
350 (158.76)	4	3	3/8-16	33.0	9.0	ER2-403	-

Round Electromagnet



Parallel Pole Electromagnets										
WLL - lbs (kg)	Height (in)	Width (in)	Length (in)	Tap Size	Holes	Spacing (in)	Watts	Weight (lbs)	24 VDC Model No.	120 VAC Model No.
55 (24.95)	1-3/8	1	2	1/4-20	2	1	6	0.75	EP2-121	-
80 (36.29)	1-3/8	1	3	1/4-20	2	2	9	1.0	EP2-131	-
100 (45.36)	1-3/8	1	4	1/4-20	2	3	11	2.0	EP2-141	-
230 (104.33)	2-3/4	2	4	5/16-18	2	3	21	5.0	EP2-242	-
320 (140.62)	2-3/4	2	6	5/16-18	2	4.5	30	8.0	EP2-262	-
430 (195.04)	2-3/4	2	8	5/16-18	2	6.50	36	10.0	EP2-282	-

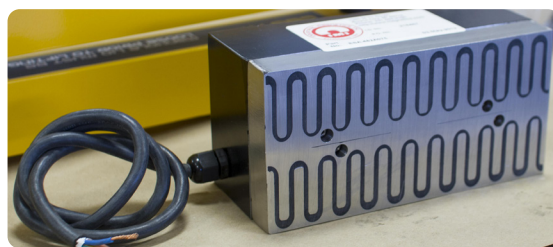
Parallel Pole Electromagnet



Power Supply						
Height (in)	Width (in)	Length (in)	Watts	Weight (lbs)	Amps	Model No.
1-3/8	3-5/16	6-1/4	100	1.00	4.5	PSA1210SB



Power Supply



Custom Electromagnets are available.

MAGNETIC COUNTER WHEELS

Magnetic counter wheels can be used with a mechanical counter to measure the length of coiled steel and aluminum. Allowing the operator to monitor shift or roll production, detect shortages or overages and record the amount of defective stock. Unlike rubber faced wheels, magnetic wheels do not tend to slip on oily stock. When used in aluminum applications, magnetic counters can run on the steel feed or pinch rolls.

FEATURES:

- » Ideal Wheel dia. is 3.8197" ±0.0010" to measure one linear foot per revolution.
- » The face width is 0.813" with a 0.5" long hub with a 1/4-20 set screw.

Description	Model No.
Counter Wheel - 3/8" Bore	5C926-038
Counter Wheel - 1/2" Bore	5C926-050

