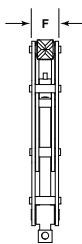
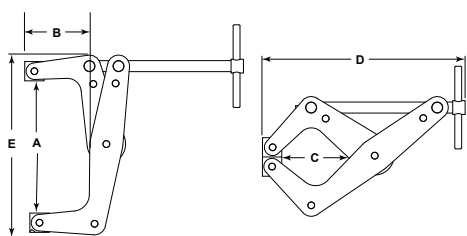


CANTILEVER CLAMPS

DEEP REACH CLAMPS IN HIGH VISIBILITY YELLOW



Easily see clamps in action or find them quickly. Helps prevent tools left in critical areas where foreign objects cannot be left behind. FOD (Foreign Object Debris) free.

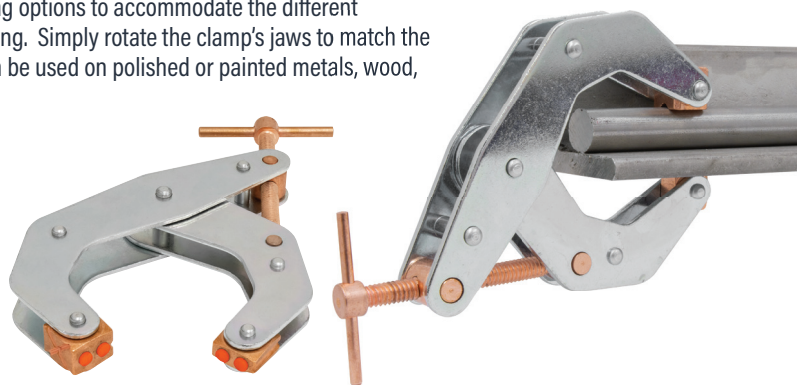


Jaw Capacity A (in)	Throat Depth Open B (in)	Throat Depth Closed C (in)	Overall Length D (in)	Width Open E (in)	Thickness F (in)	Max Clamp Force (lbs)	Handle Diameter & Length (in)	Handle Dia & Length w/Weaver-Grip™ (in)	Weight (lbs)	Model No.	Model No. With Weaver-Grip™
2-1/2	1-3/4	1-13/16	4-1/2	4-1/16	7/8	700	1/8 x 1 3/4	11/16 x 2-1/2	.51	K025TDHVV	K025TDHVVW
4-1/2	2-3/8	2-5/8	7-1/2	7	1-1/8	1700	1/4 x 3	7/8 x 4	1.75	K045TDHVV	K045TDHVVW
6	5	5	11-1/2	10	1-3/8	2000	5/16 x 3 3/4	1-1/8 x 5	3.75	K060TDHVV	K060TDHVVW

4-IN-1, "MULTIPLE-JAW" DEEP REACH CLAMPS



Each deep-reaching, Multiple-Jaw clamp offers four clamping options to accommodate the different surfaces of your work pieces: flat, pipe, angled or non-marring. Simply rotate the clamp's jaws to match the surface style of your part. The polyurethane grip option can be used on polished or painted metals, wood, plastic, aluminum, or any soft material.

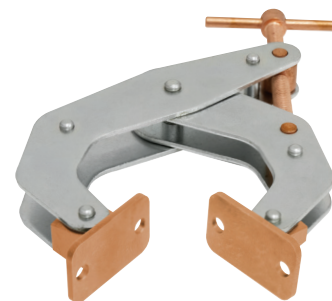
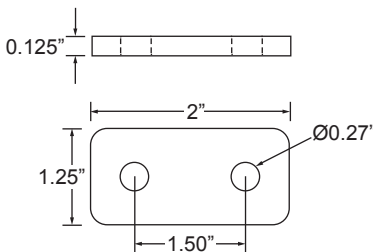


Jaw Capacity A (in)	Throat Depth Open B (in)	Throat Depth Closed C (in)	Overall Length D (in)	Width Open E (in)	Thickness F (in)	Max Clamp Force (lbs)	Handle Diameter & Length (in)	Handle Dia & Length w/Weaver-Grip™ (in)	Weight (lbs)	Model No.	Model No. With Weaver-Grip™
4-1/2	2-3/8	2-5/8	7-1/2	7	1-1/8	1700	1/4 x 3	7/8 x 4	1.75	K045TMD	K045TMDW
6	5	5	11-1/2	10	1-3/8	2000	5/16 x 3 3/4	1-1/8 x 5	3.75	K060TMD	K060TMDW

ADAPTABLE "WIDE FOOT JAW" DEEP REACH CLAMPS



Ideal for clamping material end-to-end or any clamping requirement needing a larger clamping surface. Feet contain mounting holes that adapt to special bracketry needed to hold your work piece, whether it is larger flat brackets or brackets designed to hold odd shaped parts.



Jaw Capacity A (in)	Throat Depth Open B (in)	Throat Depth Closed C (in)	Overall Length D (in)	Width Open E (in)	Thickness F (in)	Max Clamp Force (lbs)	Handle Diameter & Length (in)	Handle Dia & Length w/Weaver-Grip™ (in)	Weight (lbs)	Model No.	Model No. With Weaver-Grip™
4-1/4	2-3/8	2-5/8	8	7	1-1/4	1700	1/4 x 3	7/8 x 4	1.85	K045TFD	K045TFDW
5-3/4	5	5	12	10	1-1/4	2000	5/16 x 3 3/4	1-1/8 x 5	3.85	K060TFD	K060TFDW