



ELECTROMAGNETS

PARALLEL, ROUND & RECTANGULAR

Electromagnets are most effective when they are used in applications having direct contact with the work surface. Special sizes, voltages and mountings are available.

Benefits:

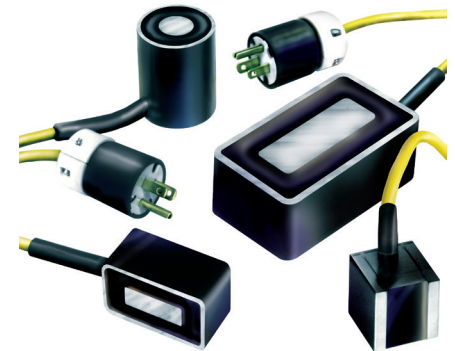
- » Electromagnets offer controlled holding power and on-command release of ferrous parts
- » Encased in steel and constructed with high temperature potting material
- » Ideal for robotic and automated systems

PARALLEL ELECTROMAGNETS

Parallel pole electromagnets offer broad application potential due to their ability to deliver improved strength when in contact with uneven shapes. These magnets can operate where parts have uneven surfaces or odd shapes by using custom machined pole shoes to match the shape of the part.

Benefits:

- » Standard models have side mounted terminal block connections
- » All sizes available in 24 volts DC
- » Excellent holding power in a compact package
- » Common mounting bolt sizes in 1" & 2" wide models
- » Continuous duty 70°C - 95°C temperature rise
- » End exit lead/cord available on all models



FEATURES:

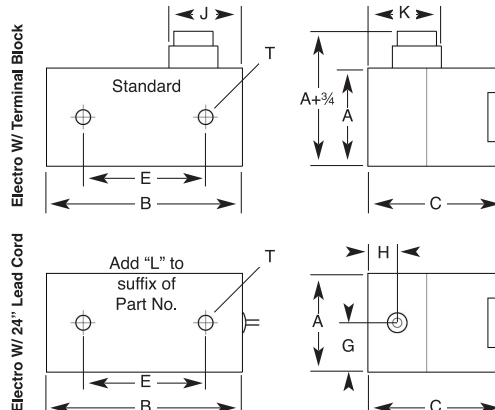
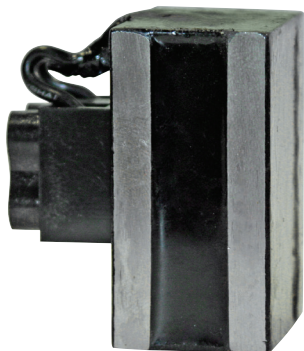
- » 12VDC, 24VDC, 110VDC or 120VAC
- » Automated or manual operation
- » Fast on/off operation
- » 24" leads or terminal block
- » Tapped mounting holes

CUSTOM DESIGNS & OPTIONS:

- » Selected cord locations
- » Extended lead lengths
- » Lead protection
- » Retractable cords
- » Controlled holding power with optional variable power supplies
- » Custom sizes

HOLDING VALUE	24VDC PART NO.	WIDTH	LENGTH	HEIGHT	THREAD	HOLE SPACE	LEAD	LEAD	BLOCK	BLOCK	WATTS	WEIGHT
		A	B	C	T	E	G	H	J	K		
40 lbs	EP2-121	1	2	1 ^{3/8}	1/4-20	1	1/2	1/4	1-1/2	1-1/2	6	.22 lb.
85 lbs	EP2-131	1	3	1 ^{3/8}	1/4-20	2	1/2	1/4	1-1/2	1-1/2	9	1 lb.
100 lbs	EP2-141	1	4	1 ^{3/8}	1/4-20	3	1/2	1/4	1-1/2	1-1/2	11	0.5 lb.
230 lbs	EP2-242	2	4	2 ^{3/4}	5/16-18	3	1	1/2	1-1/2	1-1/2	21	5 lbs.
320 lbs	EP2-262	2	6	2 ^{3/4}	5/16-18	4 ^{1/2}	1	1/2	1-1/2	1-1/2	30	8 lbs.
430 lbs	EP2-282	2	8	2 ^{3/4}	5/16-18	6 ^{1/4}	1	1/2	1-1/2	1-1/2	36	10 lbs.

All dimensions are stated in inches.

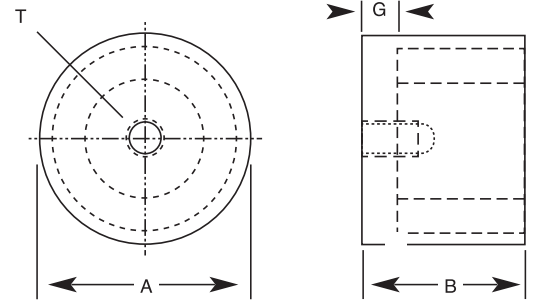


TOLL FREE 1.888.582.0823 imi@magnetics.com



ROUND ELECTROMAGNETS

Round electromagnets are available in a variety of sizes. They deliver concentrated power and high responsiveness in a manual or automatic application. Operating under the control of IMI power supply units, round electromagnets in 12VDC, 24VDC, 110VDC (available upon request) or 120VAC configurations deliver optimum holding power.



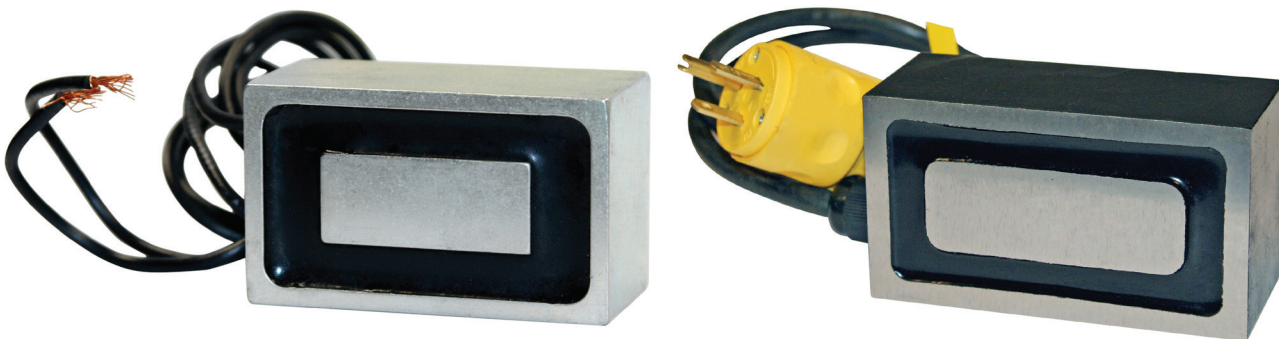
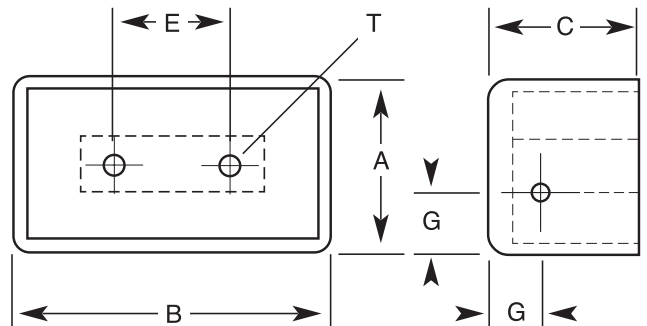
HOLDING VALUE	12VDC PART NO.	24VDC PART NO.	120VAC PART NO.	DIA.		LENGTH	THREAD	LEAD	WATTS	WEIGHT
				A	B	T	G			
6 lbs	ER1-071	ER2-071	-	3/4	1-1/4	10-32	1/4	1.44	1.7 oz	
7 lbs	ER1-101	ER2-101	-	1	3/4	10-32	1/4	1.44	1.9 oz	
12 lbs	ER1-102	ER2-102	-	1	1-1/4	10-32	1/4	3.60	2.6 oz	
22 lbs	ER1-103	ER2-103	-	1-1/4	1-1/4	1/4-20	1/4	4.40	4.2 oz	
40 lbs	ER1-104	ER2-104	-	1-1/2	1-1/2	1/4-20	1/4	4.60	8.0 oz	
75 lbs	ER1-201	ER2-201	ERA-201	2	1-5/8	1/4-20	3/8	6.00	1.0 lb	
90 lbs	ER1-202	ER2-202	ERA-202	2	2-1/2	1/4-20	3/8	16.80	2.0 lbs	
185 lbs	ER1-303	ER2-303	ERA-303	3	3	5/16-18	3/8	26.30	5.0 lbs	
325 lbs	ER1-403	ER2-403	-	4	3	3/8-16	3/8	33.00	9.0 lbs	

All dimensions are stated in inches.



RECTANGULAR ELECTROMAGNETS

Rectangular electromagnets are available in a variety of sizes. These magnets provide positive holding power and high responsiveness in numerous manual or automatic applications. Controlled by a remote IMI power supply, rectangular electromagnets are available in 12VDC, 24VDC, 110VDC (available upon request) and 120VAC models. They deliver positive holding power tailored to the material being handled.



HOLDING VALUE	12VDC PART NO.	24VDC PART NO.	120VAC PART NO.	WIDTH		LENGTH	HEIGHT	THREAD	HOLE SPACE	LEAD	WATTS	WEIGHT
				A	B	C	T	E	G			
55 lbs	ES1-111	ES2-111	-	1-1/2	1-1/2	1-1/4	10-32	CTR	3/8	8.0	.31 lb.	
100 lbs	ES1-121	ES2-121	ESA-121	1-1/2	2-1/2	1-1/4	10-32	1	3/8	9.7	1 lb.	
200 lbs	ES1-221	ES2-221	ESA-221	2-1/2	2-1/2	1-1/2	1/4-20	CTR	3/8	14.4	2 lbs.	
400 lbs	ES1-241	ES2-241	ESA-241	2-1/2	4-1/2	1-7/8	1/4-20	2	3/8	30.0	5 lbs.	

All dimensions are stated in inches.

Note: 120 VAC models are complete w/ NEMA 5-15P plug w/ internal rectifier. DO NOT REMOVE PLUG.

Key Markets

Automotive Tier 1 & 2, Fabrication, Metal Forming

Related Products

Power Supplies, Transporters®, PowerLifts®, Creative Lifts®, RELM, Battery Lift, Demagnetizers