



Low Profile Conveyors

Industrial Duty Magnetic & Non-Magnetic Low Profile Conveyors

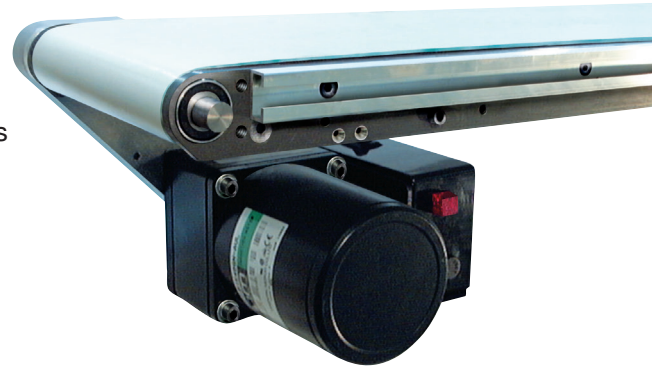
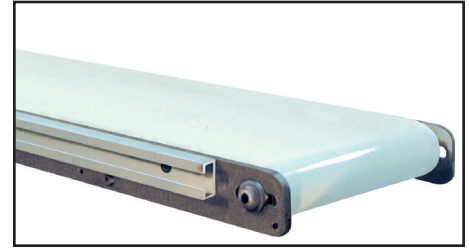
AUTOMATION

AG-08C

Industrial Magnetics, Inc. • 1385 M-75 South • Boyne City, MI 49712 • p: 888.582.0823 • f: 231.582.2704 • w: www.magnetics.com • e: imi@magnetics.com

FEATURES:

- Available in Magnetic and Non-Magnetic models
- Standard sizes to match your application requirements
- Low overall clearance design requires minimal space for installation
- Magnetic unit circuits are the same width as the belt to hold parts firmly from edge to edge
- Low profile design allows for fast belt replacement, reducing downtime
- Oil and abrasion resistant urethane belts
- Endless belts for longer belt life and less maintenance
- Crowned take-up pulleys for accurate belt tracking
- Designed for easy tracking and take-up adjustments
- Crowned drive pulleys are knurled for positive belt traction and accurate alignment
- Gang or individual drive options are available



Low Profile Conveyor Specifications:

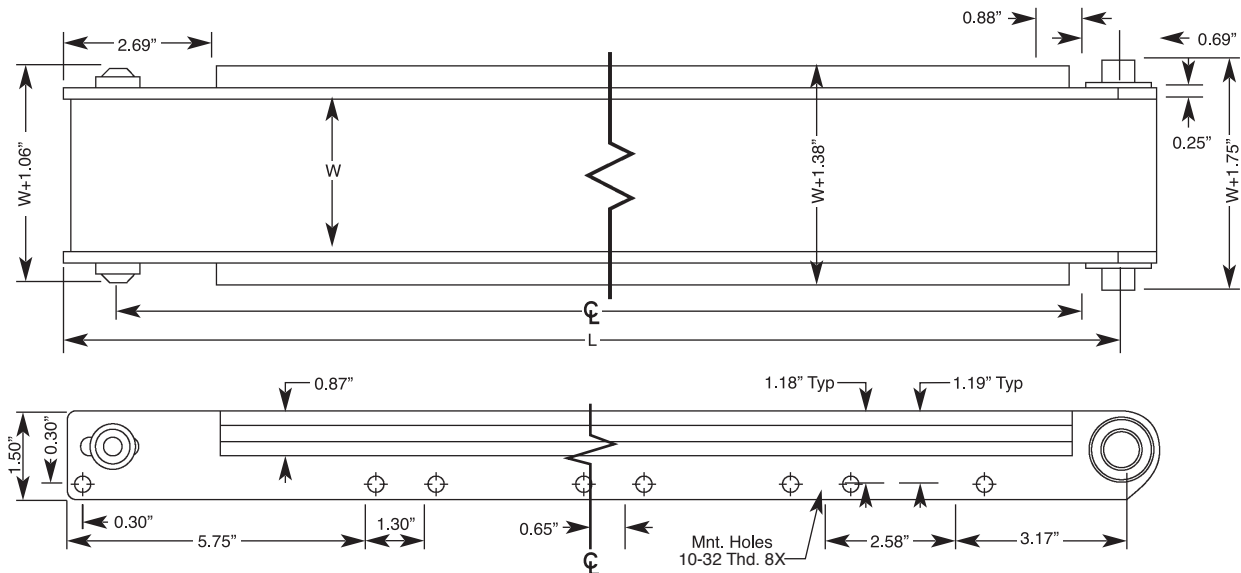
- Anodized aluminum, precision machined frame
- 3/8" machined aluminum slider bed (non-magnetic)
- Precision crowned aluminum pulleys
- Double-sealed metric style pulley bearings for long term durability and superior performance
- T-slot aluminum extrusion on each side for easy accessory mounting and adjustments
- Choose from a wide variety of standard smooth surface and cleated belts. See Belt Selection Chart on opposite page.
- The LPC series conveyors have a maximum load-carrying capacity of 60 lbs.
- Operating load capacity* for the LPC conveyors is dependent on the conveyor size, incline, drive package and other application specific factors

Low Profile Conveyor Selection Chart:

Example Conveyor Part No.

LPC 02-24 M P1 F

Low Profile Conveyor	Width (W) Inches	Length (L) Inches	Conveyor Type S = Standard M = Magnetic	Belt Type (See Chart) U1 U2 P1 P2 F1	Belt Surface C = Cleated F = Flat
LPC	02 03 04 06 08 10 12	24 36 42 48 60 72 84 96			



*See page 2

Key Markets

Stamping, Fabrication, Punching, Canning, Plastics

Related Products

Transporters®, Demagnetizers, Transfer Rail

Low Profile Conveyor Options

Low Profile Conveyor Option and Accessories

NON-MAGNETIC

LPC GEARMOTOR SELECTION

Fixed Speed Gearmotors

Variable Speed	Speed F.P.M.	*Load Capacity	HP Amps.	Motor Part No.
7-22	23	110 lbs.	1/18 - 0.75	025B
10-31	32	60 lbs.	1/18 - 0.75	018B
20-61	65	30 lbs.	1/18 - 0.75	009B
3-8	8	150 lbs.	1/30 - 0.49	075A
5-15	16	70 lbs.	1/30 - 0.49	036A
10-31	32	30 lbs.	1/30 - 0.49	018A
12-37	39	130 lbs.	1/8 - 0.33	015D
24-74	78	60 lbs.	1/8 - 0.33	007D
70-194	196	10 lbs.	1/8 - 0.33	003D

LPC BELT SELECTION

Part No.	Belt Type & Description
U1	Standard Urethane: 85 durometer surface resists cuts and abrasions. 0.063" thick belt features athermally-welded splice. This belt is ideal for many applications and can handle hot parts up to 212°F.
U2	Sealed Urethane: 93 durometer top & bottom belt surfaces with sealed edges are very resistant to cuts and abrasions. 0.079" thick belt features a thermally welded splice. This rugged belt is ideal for wet & dirty applications and can handle hot parts up to 212°F
P1	Standard PVC: Low friction surface with black matte finish. Not for use with sharp parts. 0.079" thick belt features a thermally-welded splice. This general use belt is well suited for product accumulation and can handle hot parts up to 190°F
P2	Economy PVC: 80 durometer surface with green finish. 0.083" thick belt features a thermally-welded splice. This general purpose belt is suited for light duty conveying and can handle parts up to 158°F.
F1	Grey Friction: This high traction belt is suitable for inclined transport of light, flat parts & packaged goods. This belt allows for 20° to 30° incline angles depending on the amount of dirt, grime, oil or contaminant's on the belt. Featuring a thermally-welded splice this 0.083" thick belt can handle parts as warm as 158°F.
CB	Cleated Belts: These belts are used for spacing, timing and elevating product. Various profiles are available for U1, P1 & F1 type belts. Consult the factory for belt selection of cleated belts.

Gearmotor & Motor Mounting Selection Chart:

X X-XXXX - XX - XX

Motor Mount Position	Motor Mount Style	Motor Part No. Style	Voltage VAC	Motor Wiring
L = Left R = Right	**S = Side R = Remote	See Chart	20 = 115/60/1Ph 21 = 230/60/1Ph 23 = 230/60/3Ph	FS = Fixed Speed Module VS = Variable Speed Module TB = Terminal Box Only

*Determined by viewing the conveyor from the drive end.

** Side mount not available for 1/18 HP drive motors.

Note: For additional drive motor & motor mounting specifications, please call the factory.

OPTIONAL LPC CONVEYOR ACCESSORIES

- **Custom Drive Shafts:** 1/2" dia. custom length and/or stainless steel
- **Adjustable Guide Rail Brackets:** Attaches to conveyor T-Slot and is available in two sizes
- **T-Nuts:** For easy mounting of accessories
- **Adjustable Height Brackets:** Extruded aluminum available in 3 height ranges
- **Universal Stand:** Universal width stand with black urethane paint. Features adjustable width & height with swivel adjustment for up to 30° of incline.
- **Helical Shaft Coupler:** Provides angular flexibility with little backlash (1/2" shaft to 1/2" shaft)
- **Guide Rails & Side Fences:** Extruded aluminum with two heights available
- **Flush Mount:** mounts conveyor flush to another surface
- **Single Base Stand:** Ideal for restricted spaces and is similar construction to universal stand. Features adjustable width & height with swivel adjustment for up to 30° of incline.