

## Gravity Feed Applications – Magnets Inside Of The Product Stream

# GRATE TUBES & GRATE TUBE ASSEMBLIES



## MAGNETIC GRATE TUBES

Ideal for custom installations that require magnetic separation, but lack space for a housing or grate assembly. Tapped mounting holes in each end of the tube allow for easy bolt-in installation. Customers can arrange these tubes in a configuration that works best for their needs. Constructed from stainless steel, tubes are available in our Customary Grade finish, Food Grade & Sanitary Grade finishes.



Welded Ends

Grate Tubes

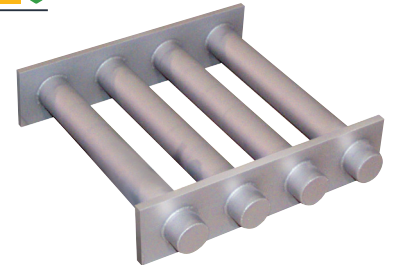
Rolled Ends

## MAGNET MATERIALS FOR GRATE TUBES AND GRATE ASSEMBLIES

**Ceramic:** For small to large ferrous particle separation (nails, bolts, washers, etc.)

**Rare Earth UHI-52™ (52 MgOe Circuit):** Extremely powerful magnet material is used for "fine particle" separation such as metal filings, shavings, metal wear residue, work hardened stainless steel, etc.

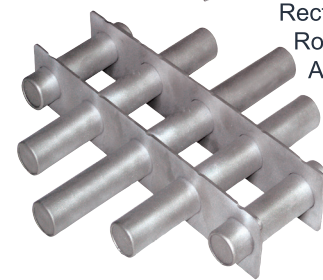
**Alnico (Custom Designs):** High heat applications up to 800°F. Particle size and separation performance is the same as Ceramic.



Rectangular & Round Grate Assemblies



Find Magnetic Grates & Tubes Online And Download Technical Sheets At...  
<http://www.magnetics.com/tg/grates.asp> Download Or Request Grate Tube Tech Sheet



## LIQUID LINE Applications – Magnets Inside & OUTSIDE Of The Product Stream

# LIQUID LINE T-TRAPS

IMI's T-Traps remove unwanted ferrous and work-hardened stainless contaminants from processing lines. They capture fine ferrous particles that are created by wear of upstream processing equipment. T-Traps are typically placed in front of pumps, screens and mills to protect vital plant equipment from costly metal damage and system downtime. IMI's standard T-Traps are designed for line pressures up to 200 psi (13.8 bar) and can operate at temperatures up to 290°F (143°C).

- » USDA Approved, 316 stainless steel sanitary construction
- » Powerful Rare Earth Magnetic Circuit
- » Standard line sizes from 1½" - 6" (other sizes available)
- » Inlet/Outlet ferrules for clamping (Tri-Ciamp and weld ends are standard)
- » Quick clamp system on magnetic filter cap
- » EPDM Standard Gasket Material (BUNA-N & VITON available)
- » Designed for line pressures up to 200 psi
- » Standard maximum operating temperatures of 220°F
- » Optional Strainer Basket on Large Tube

Find T-Traps Online And Download Technical Sheets At...  
<http://www.magnetics.com/tg/liquid.asp>  
Download Or Request Liquid Line Tech Sheet



Tube Style T-Trap

T-Trap with Strainer Basket



Plate Style T-Trap

