

# GRAVITY FEED APPLICATIONS - MAGNETS INSIDE OF THE PRODUCT STREAM



## DRAWER-IN-HOUSINGS FAMILY

### The Ox® Drawer-In-Housing ■ ■

Stainless Steel Construction similar to our other Drawer-In-Housings, the Ox® contains coated tubes, powerful compression springs and special wiper seals to virtually eliminate sticking, galling, static buildup and corrosion on the tubes.

- Powerful 52 MgOe Rare Earth Circuit - The strongest in the industry!
- Hydex® Wiper Seals - Ideal for removing sticky product residue
- Nedox® coated tubes standard (See page 4, "Finishes and Protective Coatings")
- Compression Spring Assisted Seal Plate
- Food Grade EPDM Gasket Material - for leak resistant operation

### Large Tube Housing™ (LTH) ■ ■

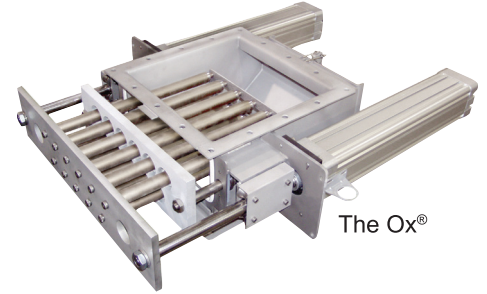
The LTH Drawer-In-Housing works extremely well for applications that have a tendency to bridge or plug a standard Drawer-In-Housing. Large 3" diameter tubes allow enough room for high volume product flows while capturing ferrous metal. The LTH is ideal for flour, powdered sugar or moist products.

- Powerful 52 MgOe Rare Earth Circuit
- BUNA Wiper Seals -for removing collected metal
- Compression Spring Assisted Seal Plate
- Stainless Steel Construction
- Food Grade EPDM Gasket Material - for leak resistant operation

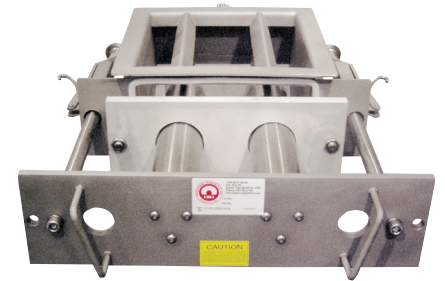
### The RotoDrawer™ Drawer-In-Housing

Rotary Style Drawer-In-Housing Magnet to rid ferrous metal from powder & bulk processed products that have a tendency to bridge, choke and require a high degree of product purity. It features a motorized, cylindrical configuration of magnetic tubes that continually rotate through a gravity fed product stream. The rotational design of the magnet, along with our unique splitter bars, serve to break up any clumps of product and allow for easy flow through the magnetic housing while capturing any ferrous metal contamination and purifying the product.

- Powerful 52 MgOe Rare Earth Circuit - The strongest in the industry!
- SimpleClean™ & Self-Cleaning models standard (EZ-Clean available)
- Standard sizes range from 8"x8" to 18"x18" with custom designs available



The Ox®

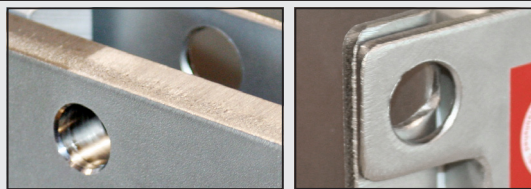


Large Tube Housing™



RotoDrawer™  
Shown with Custom Motor and  
Optional Push-button controls

**Pictured:**  
Examples of the Drawer  
and the Rear Access  
Door Lock-Out



Find Drawer-In-Housings Online And Download Technical Sheets At...  
<http://www.magnetics.com/tg/housings.asp>  
Download Or Request Tech Sheet TG-03B, TG-03C & TG-03E

The IMI magnets identified with ■ are certified by HACCP International as fully conforming to HACCP International's Food Safety Standard.

The IMI separation magnets identified with ■ have been accepted by the United States Department of Agriculture.