



### PNEUMATIC LINE MAGNET

## BULLET® MAGNET

**Improve product purity while protecting processing equipment from metal damage.**

Aerodynamically shaped with a solid stainless steel nose cone diverter, the flow-thru design of the Bullet® Magnet maintains uniform velocity in-line flow, allowing it to be used anywhere in the pneumatic system. It is commonly used ahead of processing equipment and bulk load out to assure product purity and protect machinery from tramp metal damage. Ideal for dilute phase systems, typical Bullet® Magnet applications include: movement of powder and granular, flour, chemical, plastic, food stuff, pharmaceutical and mineral materials.

The Bullet® Magnet is permanently mounted onto a hinged door for easy cleaning accessibility. The magnet has an EZ-Clean Stripper Collar slides off with minimum force and allows for fast cleaning and removal of captured tramp metal. As the collar is removed, the captured tramp metal slides off with it, and falls off as soon as it is removed from the magnetic field.

The Rare Earth model features our powerful Opti-L™ Large Tube 52 MGOe Rare Earth Circuit that achieves 28 lbs. of pull value and over 12,000 Gauss. Designed for optimum reach-out, surface holding strength and durability. It is an exceptionally powerful magnet field to capture fine particle ferrous or weakly magnetic contaminants that were previously unattainable.

The Bullet magnet is available in sizes ranging from 3" to 8" diameters, with custom sizing and options available upon request.



Example of the Door Lock-out



**HACCP International Certified and USDA AMS Accepted Equipment.**



Our **Sanitary Grade Bullet Magnets** are certified by HACCP International and fully conform to HACCP International's Food Safety Standard (0909MAGSEP 1-2010) for direct contact with food product.



Our **Sanitary Grade Bullet Magnets** are USDA AMS accepted Dairy, Meat and Poultry magnetic separator processing equipment.

### FEATURES:

- » Ceramic 8 or 52 MGOe Rare Earth Magnetic Material.
- » Stainless steel construction
- » Food grade finish and welds
- » Flow-thru design with aerodynamic stainless steel nose cone designed to maintain a balanced flow and uniform velocity through the housing
- » Designed for systems operating at or below 15 psi
- » Extends the life of filters and screens
- » Leak-Resistant Silicon seal (factory tested to 15psi)
- » EZ-Clean Stripper Collar (Rare Earth models)
- » Magnet mounted on hinged door with Lock-Out to allow for removal from product flow when cleaning
- » Gas springs to assist door opening on 8" models. (except horizontal side mounted installation)

### OPTIONS:

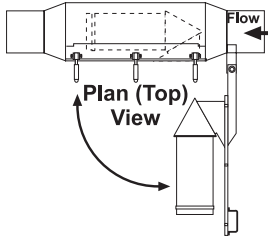
- » Cart mounted models available for truck and rail-car bulk unloading
- » Standard pipe-size ends
- » Custom line sizes
- » Other stainless steel grades available
- » Sanitary finish and welds
- » ANSI spec/bolt pattern flanges
- » Side mounted hinges
- » Camlock fittings
- » Gas springs for door assist
- » Metal detectable, X-Ray inspectable, gaskets/seals
- » Bolt On Nose Cone

**TOLL FREE 1.888.582.0821 imi@magnetics.com**

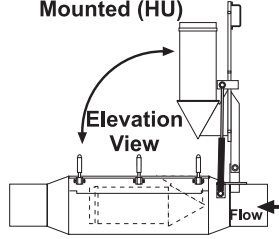


## Bullet® Magnet Installation Guidelines

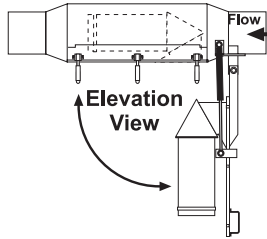
**\*Horizontal Side Mount (HS)**



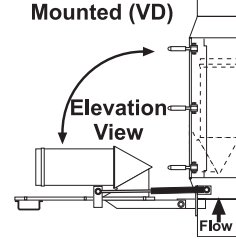
**\*Horizontal Up Mounted (HU)**



**\*Horizontal Down Mounted (HD)**



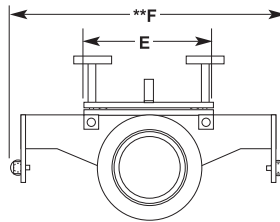
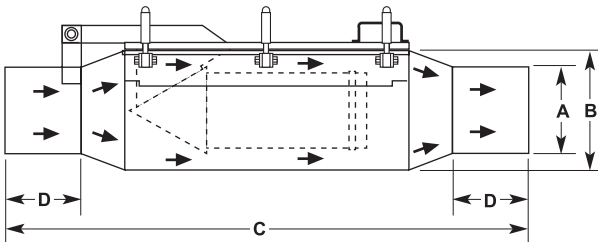
**\*Vertical Down Mounted (VD)**



Pneumatic Line Magnets can be installed at an angle. Vertical Position will allow product to drain from the magnet area when the system is shut down. For Placement of a pneumatic line magnet near a curve: Magnet should be located 10 times the line diameter away from the curve. Example: 10 X 4" line = 40" from curve.

**NOTE:** \*Modular Door Mounting Kit is available for 6" and larger Bullet® Magnets. The kit allows for on-site installation position changes for Bullet® Magnets ordered for HU, HD and VD mounting styles.

## Bullet® Magnet Standard Specifications:



### Ceramic Magnet Models

MODEL	A (O.D.)	B (O.D.)	C	D	E	F**	WEIGHT (LBS.)
BM3000CFG	3	5.50	36	5.50	9.25	9.25	87
BM4000CFG	4	5.50	36	5.50	9.25	9.25	87
BM5000CFG	5	5.50	36	5.50	9.25	9.25	87
BM6000C__FG	6	8.50	48	5	12.88	26.75	250
BM8000C__FG	8	9.50	48	5	12.88	26.75	255

### Rare Earth Magnet Models

MODEL	A (O.D.)	B (O.D.)	C	D	E	F**	WEIGHT (LBS.)
BM3000REZFG	3	5.50	36	4	9.25	9.25	95
BM4000REZFG	4	5.50	36	4	9.25	9.25	100
BM5000REZFG	5	5.50	36	4	9.25	9.25	105
BM6000REZFG	6	6.50	36	4	10.25	10.25	112
BM8000R__EZFG	8	9.50	48	5	12.88	26.50	212

**NOTE:** All Dimensions Are Stated In Inches. \*\*8 inch O.D. models and greater have door mounted gas springs and supports.