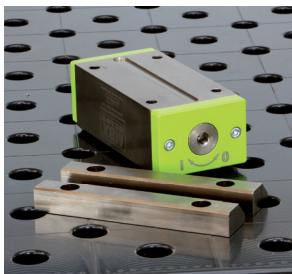
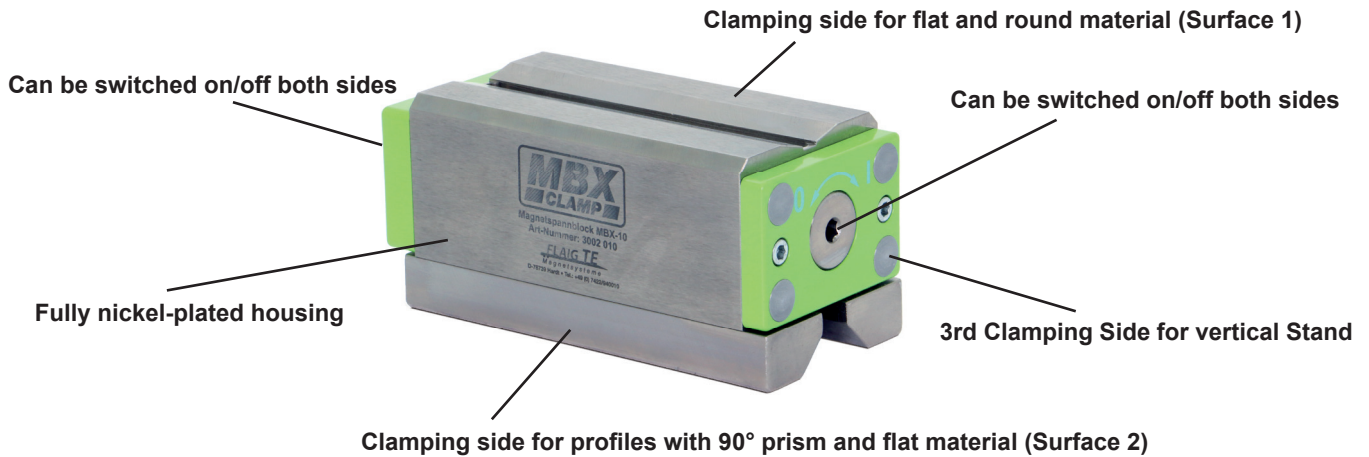


# MAGNETIC CLAMPING BLOCKS



## MAGNETIC CLAMPING BLOCKS

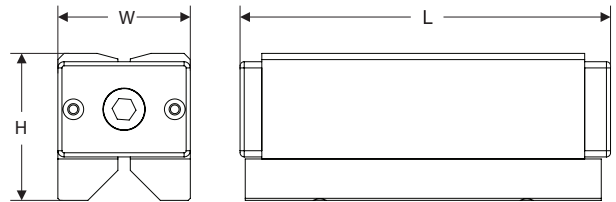
The MBX magnetic clamping block holds itself on the table and tension the workpiece



the 90° poles of the MBX can be replaced with workpiece-specific poles



Multiple MBX can be switched at the same time (Hex rod not included)



Model No.	Overall Dimensions			Surface 1 Dimensions			Surface 2 Dim. w/ 90°			
	L	W	H	L	W	Dia. Min.	L	W	Dia. Min.	Weight (ea)
MBX05PK2	5.63"	2.52"	2.80"	4.72"	2.24"	2"	5.35"	2.5"	3/8"	8.6 lbs
	143 (mm)	64 (mm)	71 (mm)	120 (mm)	57 (mm)	50 (mm)	136 (mm)	64 (mm)	10 (mm)	3.9 Kg
MBX07PK2	7.01"	2.52"	2.80"	6.14"	2.24"	2"	6.77"	2.52"	3/8"	10.8 lbs
	178 (mm)	64 (mm)	71 (mm)	156 (mm)	57 (mm)	50 (mm)	172 (mm)	64 (mm)	10 (mm)	4.9 Kg
MBX10PK2	7.24"	3.43"	3.47"	6.38"	2.24"	2"	7.01"	2.99"	1"	19.40 lbs
	184 (mm)	87 (mm)	88 (mm)	162 (mm)	57 (mm)	50 (mm)	178 (mm)	76 (mm)	25 (mm)	8.8 Kg

Model No.	Breakaway Pull Pounds from Work Holding Face					
	Force to Breakaway from one surface	Force to Breakaway from either Top Plate (1" plate) or Bottom Plate (3" plate)	Force to Breakaway from Base Plate with 1" Plate on Either Pole Face	Sheer Force to Slide Plate on either Magnet Face	1.5" O.D. Bar Pulled from V-Pole w/Magnet on 3" Base Plate	1.5" O.D. Bar Pulled from Flat Pole w/Magnet on 3" Base Plate
MBX05PK2	1125 lbs (510 Kg)	320 lbs (145 Kg)	120 lbs (54 Kg)	80 lbs (36 Kg)	180 lbs (81 Kg)	115 lbs (52 Kg)
MBX07PK2	1575 lbs (714 Kg)	370 lbs (167 Kg)	160 lbs (72 Kg)	100 lbs (45 Kg)	200 lbs (90 Kg)	130 lbs (58 Kg)
MBX10PK2	2250 lbs (1021 Kg)	600 lbs (272 Kg)	200 lbs (90 Kg)	190 lbs (86 Kg)	310 lbs (140 Kg)	280 lbs (127 Kg)