

LIFT MAGNET ACCESSORIES



■ Spreader Beams

When lifting large steel shapes, such as off-center loads, round, rectangular or long items (I-beams), one lift magnet may not be enough. IMI's Spreader Beams allow two magnets to be used at one time with only one lifting source. Magnets on a Spreader Beam keep your product level, reducing the height required to lift the load, providing a safer lift environment while reducing the time needed to move the load.

SBI Series Features

- Low cost spreader beams
- One-piece construction
- Fork lift pockets
- Multiple spreads plus center hole



SBC Series Features

- Beams 3' to 4' have 2 spreads
- Beams 6' to 10' have 3 spreads
- Swivel hooks with latches
- Designed and manufactured to ASME B30.20



SBF-1/2-2 Series Features

- Ideal for Forklifts
- One-piece Construction
- Safety restraint secures beam to the forklift
- Weight: 9.5 lbs

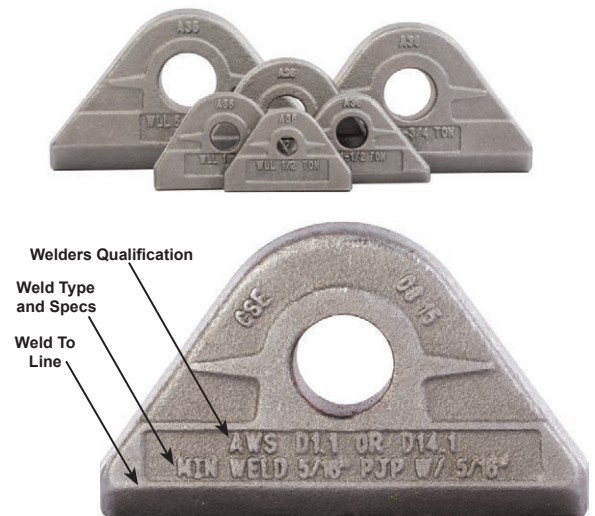
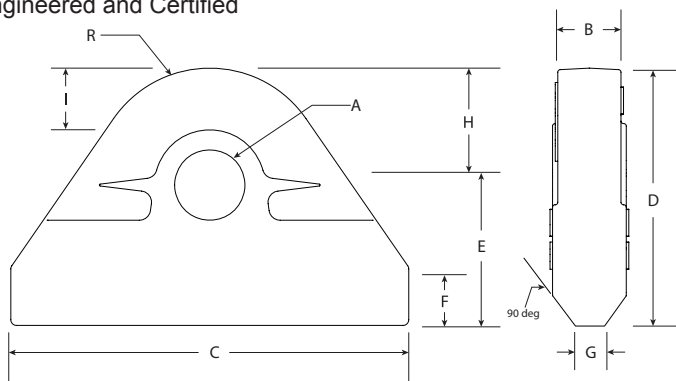
Request Tech Sheet MG-02F

■ Weld-On Padeyes

Engineered and certified to meet all ASME BTH-1 categories and classes. Eliminate the need and time to engineer, fabricate, machine and certify lifting padeyes. By purchasing these one-of-a-kind padeyes, you can have them on the shelf ready to weld and speed up delivery, testing and approval of your projects.

Features

- Hole is reamed to fit shackle pin/bolt $\pm 0.01"$
- Weldable A36 Carbon Steel or 316 Stainless Steel
- Weld Spec and Weld Line on Padeye
- Date Coded
- Engineered and Certified



Request Tech Sheet MG-08A

Carbon Model No.	Stainless Model No.	Shackle Size	WLL (t)	A	B	C	D	E	F	G	H	I	R	Wt. (lbs)	Min. Weld
PE0050	PE0050S	1/4	1/2	21/64	11/32	2-7/64	1-3/8	3/4	5/16	N/A	5/8	7/16	5/8	0.20	0.188"
PE0100	PE0100S	3/8	1	15/32	9/16	2-7/16	1-5/8	7/8	3/8	N/A	3/4	1/2	3/4	0.40	1/4"
PE0150	PE1050S	7/16	1-1/2	17/32	5/8	2-3/4	1-9/16	7/8	1/4	7/32	11/16	13/32	11/16	0.40	3/16 PJP with 3/16" Fillet
PE0200	PE0200S	1/2	2	43/64	11/16	3-1/4	2-1/8	1-1/8	7/16	5/32	1	21/32	1	0.80	1/4 PJP with 1/4" Fillet
PE0475	PE0475S	3/4	4-3/4	15/16	1-1/8	4-7/16	2-5/8	1-7/16	1/2	15/32	1-1/4	25/32	1-1/4	2.20	5/16 PJP with 5/16" Fillet
PE0650	PE0650S	7/8	6-1/2	1-1/16	1-5/16	5-3/16	2-15/16	1-5/8	1/2	3/8	1-5/16	25/32	1-5/16	3.05	7/16 PJP with 7/16" Fillet

WLL = Working Load Limit